



Woodhall Spa Parish Council
17 Stanhope Avenue
Woodhall Spa
Lincolnshire LN10 6 SP

Tel: 01526 352461
woodhallpc@tiscali.co.uk

www.woodhallspa.org



08 December 2011

WOODHALL SPA SNOW AND ICE PLAN

Background

1. The severe winter experience in 2010/11 highlighted the limitations of extant Lincolnshire County Council winter plans, particularly in respect of clearing snow from pavements. The Parish Council elected to set up a working group to examine what could be done at a local level to alleviate the effects of snow and ice on the village community. As a result of the studies the Woodhall Spa Parish Council has elected to develop a Snow & Ice Plan for winter 2011/12. The success of the plan will be monitored, possibly leading to a more ambitious plan in winter 2012/13.

Aim

2. The aim of the Woodhall Spa Snow and Ice Plan, complementing LCC Highways activities, is to increase pedestrian safety during periods of adverse winter weather.

Participants

3. The plan is focussed primarily on community effort with householders, businesses and retail outlets being responsible for clearing snow from their section of pavement. After initial snow clearance the Parish Council has put in place arrangements for main pavements within the village to be gritted. Key participants are listed at Annex A.

Plan Activation

4. The Snow and Ice Plan will be activated by the Woodhall Spa Parish Council Chairman or nominated deputy. The plan will only be activated in response to significant snowfall with no immediate thaw forecast; it will not be activated in response to frost warnings due to lack of resource. Activation procedures are at Annex B.

Gritting Route

5. The Snow and Ice Plan Gritting Route is limited to priority areas and arterial footpaths identified by the Parish Council – the route is at Annex C.

Logistics

6. The Woodhall Spa Parish Clerk is responsible for ordering necessary supplies and reclaiming VAT. Logistics arrangements are at Annex D.

Insurance

7. The Woodhall Spa Parish Clerk is responsible for ensuring all aspects of the plan are covered by appropriate insurance.

Publicity

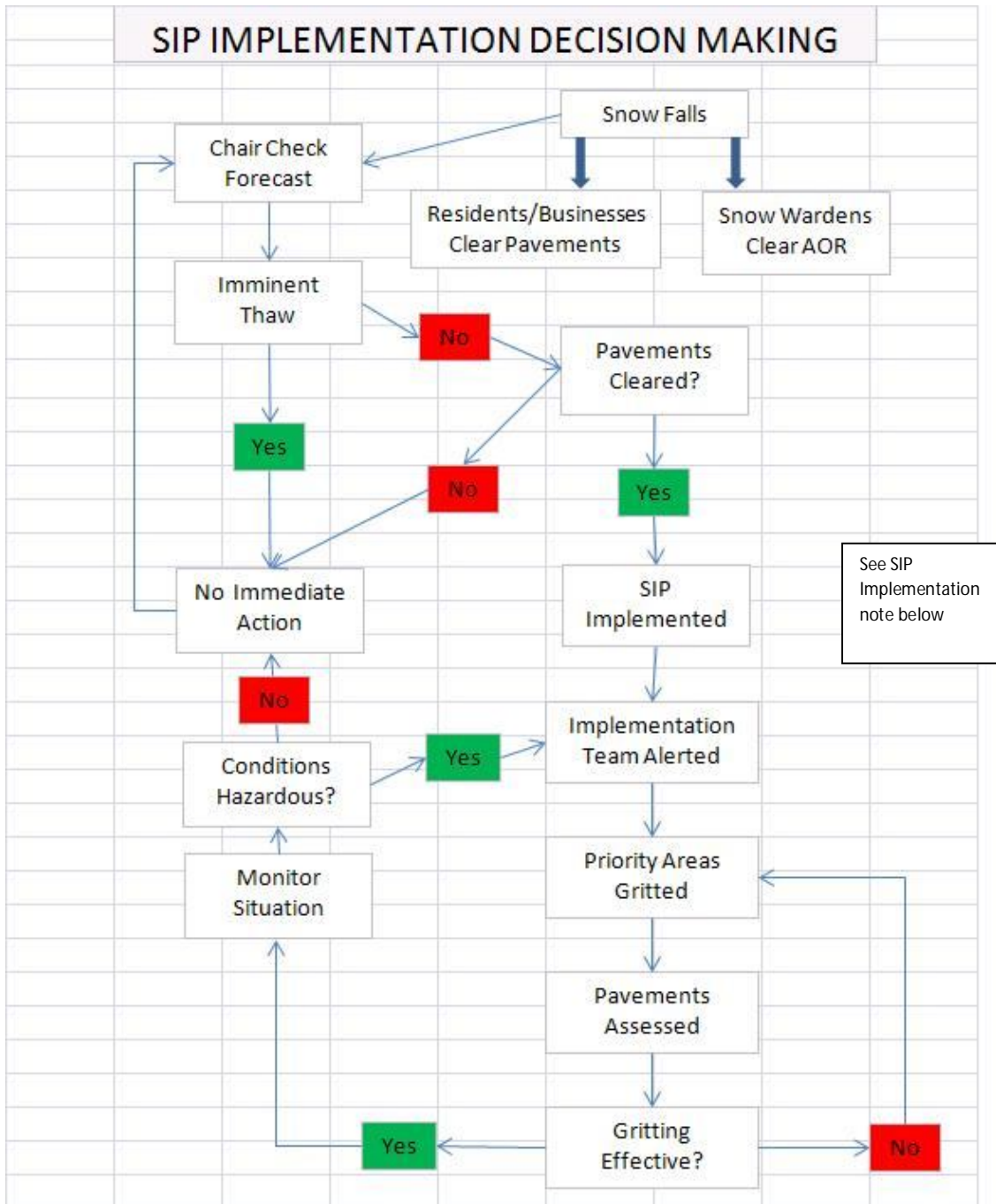
8. Success of the Snow and Ice Plan relies upon strong community involvement gained through an active media campaign. The Woodhall Spa Parish Council Chairman and Parish Clerk are responsible for all media releases.

A BUSHELL

Parish Clerk
Woodhall Spa PC

Annexes:

- A. Participants.
- B. Activation Procedures.
- C. Gritting Route.
- D. Logistics Arrangements.



SIP Implementation

Chairman alerts Snow Team Manager who contacts Friskneys to arrange delivery of tractor and plough/spreader combine.

GRITTING ROUTE

Serial	Location	Detail	Key Location	Length (m)	Width	Sq m
1	Stixwold Road	Pavement on JP side from opposite Petwood Entrance to mini roundabout		740	1.5	1110
2	Station Road	Pavement outside Bells to Zucci	Retail outlets	170	1.5	255
3	Spa Road	Car Park (opposite Co-op) and surrounding pavements		20	20	400
4	Broadway	Pavement Car Park to Golf Hotel (in entrance)	Retail outlets	380	3	1140
5	Broadway	Pavement from opposite Golf Hotel to Post Office	St Peters Church & Hall,	310	1	310
6	Station Road	Pavement from Post Office to mini roundabout	Retail outlets	240	1	240
7	Royal Square	Square and entrance paths		10	10	100
8	Witham Road	Pavement from Goodwins to Fish & Chip	Retail outlets	195	1.5	292.5
9	King Edward Road	Pavement on east side to King Edward Crescent	School access	285	1	285
10	King Edward Crescent	Pavement to school entrance	School access	75	1	75
11	The Close	All paths		300	1	300
12	The Close	Access path from The Close to Community Centre (Alexandra Road)		100	1	100
13	Alexandra Road	Pavement to Witham Road		285	1	285
14	Witham Road	Pavement to Turnberry Drive		125	1	125

15	Viking Park	one side only Turnberry to Muirfield to Moor Park to Forest Pines to Wentworth	Estate arterial route	1395	1	1395
16	Witham Road	Turnberry to mini roundabout		330	1	330
17	Tattershall Road	Goodwin side to Albany Road		155	1.5	232.5
18	St Leonards	Albany to St Peters Drive to St Leonards Ave	Estate arterial route	600	1	600
19	Tattershall Road	St Leonards to Albany		190	1	190
20	Tattershall Road	Victoria Ave to Arnhem Way		280	1	280
21	Arnhem Way	south side pavement		300	1	300
22	Cromwell Ave	from Arnhem Way junction to Stanhope Ave	School access	135	1	135
23	Stanhope Ave	to Tor - o- Mor		100	1	100
24	Tor-o-Mor Road	to Kirkby Lane	Arterial route	880	1	880
25	Kirkby Lane	to Woodland Drive		120	1	120
26	Woodland Drive	follow loop back to Kirkby Lane	Estate arterial route	770	1	770
27	Kirkby Lane	to Horncastle Road junction		310	1	310
28	The Broadway	to opposite Golf Hotel		605	1.5	907.5
29	Stanhope Ave	Broadway to Cromwell Ave		290	1	290
Totals				9695		11857.5

Logistics

Grit Bins

- LCC grit bins are the sole responsibility of LCC. Refill requests should be telephoned to 01522 782070.
- PC grit bins will be replenished from the PC bulk grit supply by the Snow Team Manager as required.

Grit Storage

- The bulk grit supply will be purchased from Woodhall Spa Sand & Gravel and stored at the Petwood Hotel.

Tractor Hire

- A tractor fitted with snow plough and grit spreader will be hired from JT Friskneys as required. Snow team operators will be trained by JT Friskneys on the first call-out.

Protective Clothing

- Protective clothing for the snow team will be made available through the Parish Clerk.

Snow Warden Equipment

- Snow shovels will be available through the Parish Clerk.